

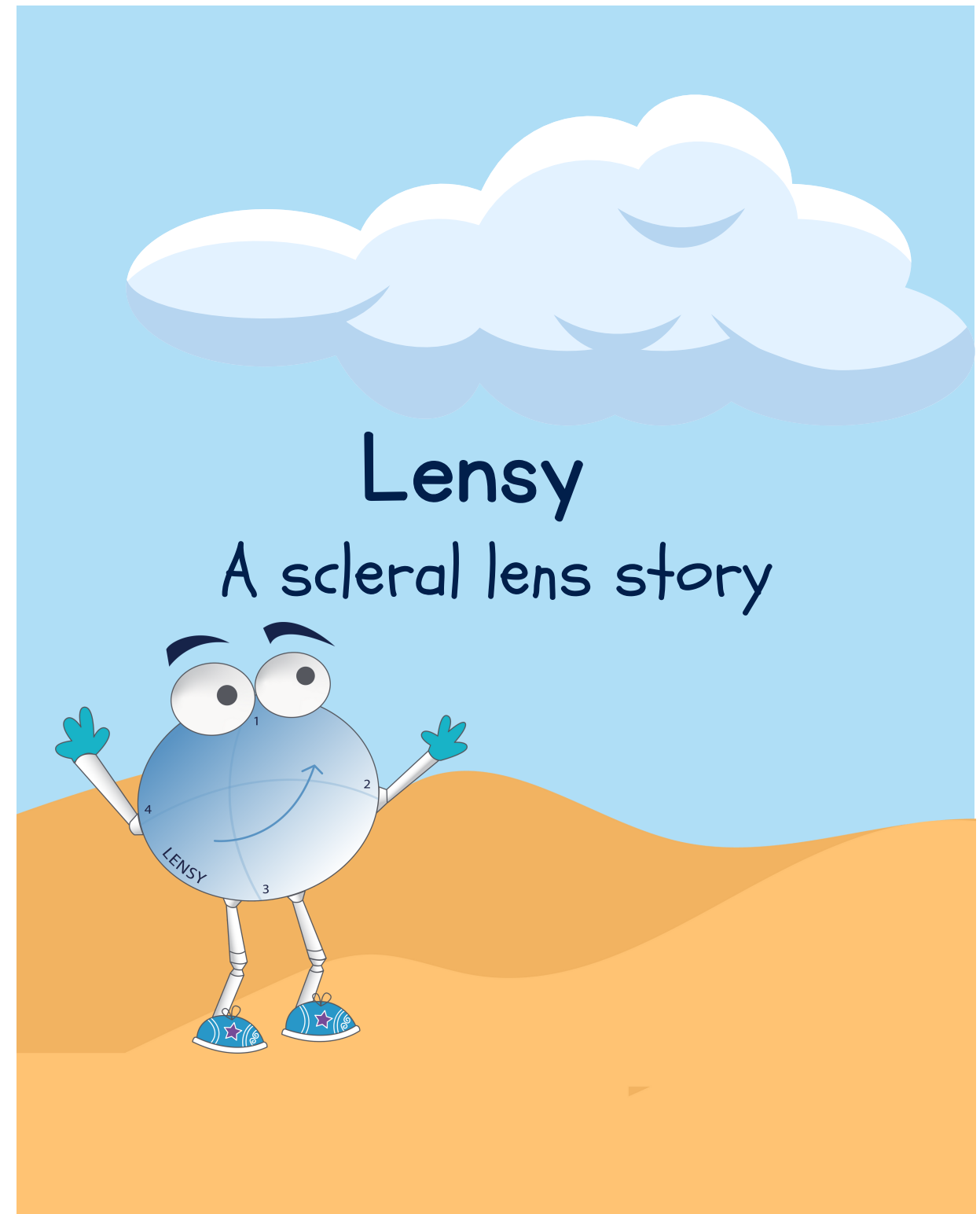
# Instructions for printing this booklet

1. Do NOT print this page. It will modify the flow of the book. Delete this page or select the correct page numbers when printing.
2. Print on Legal size paper (8.5" x 14")
3. Print double-sided and select "Flip on short edge"
4. Your papers can then be folded in half to create a mini book!

NOTE: On pages 20-21, Practice with Lensy's Friends, we recommend .5" clear round stickers, which can be purchased in a large roll at <https://www.amazon.com/Crystal-Transparent-Stickers-Envelope-Adhesive/dp/B0882MD99J>

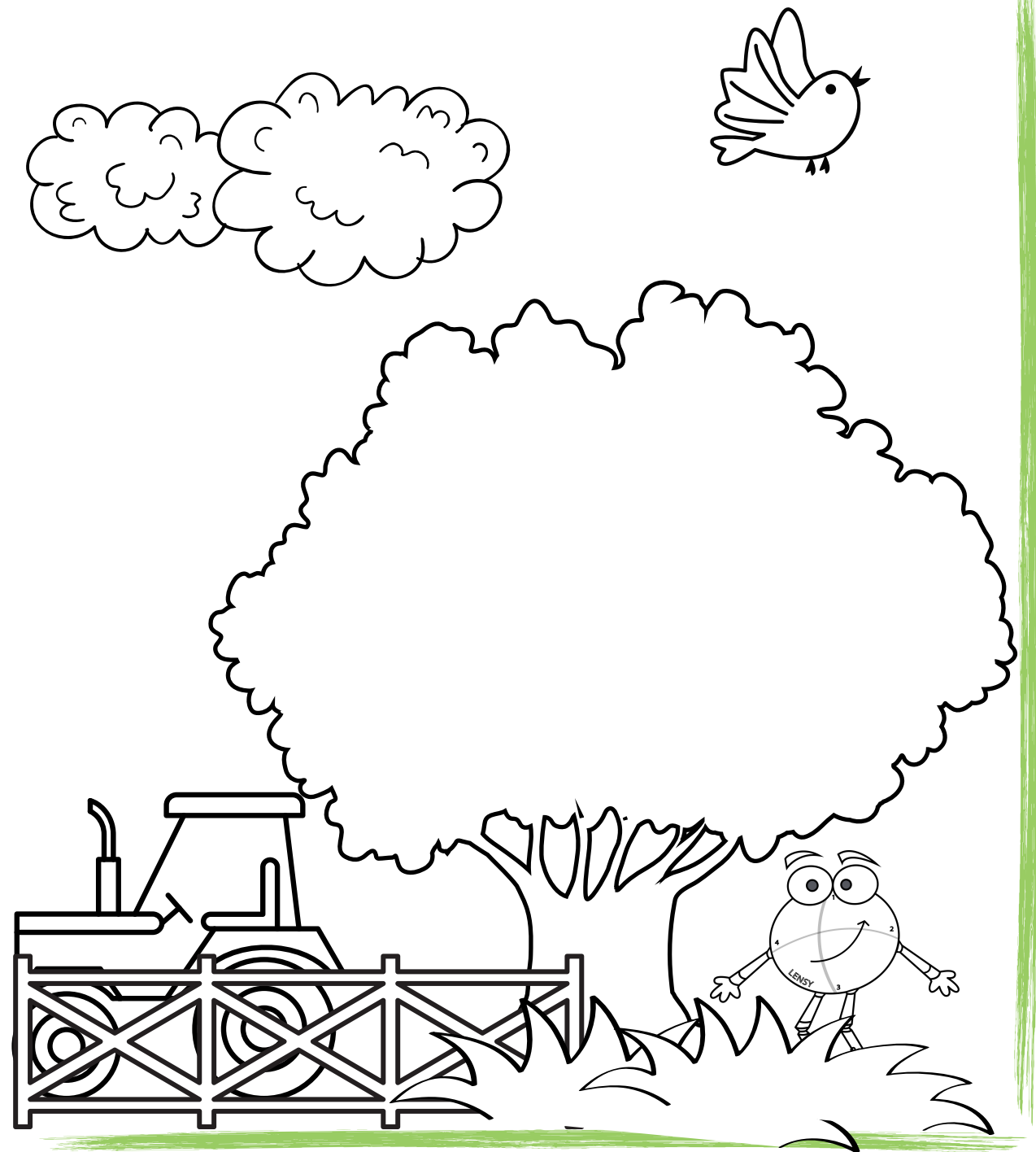


464 Hillside Ave Ste 205  
Needham, MA 02494  
[www.bostonsight.org](http://www.bostonsight.org)

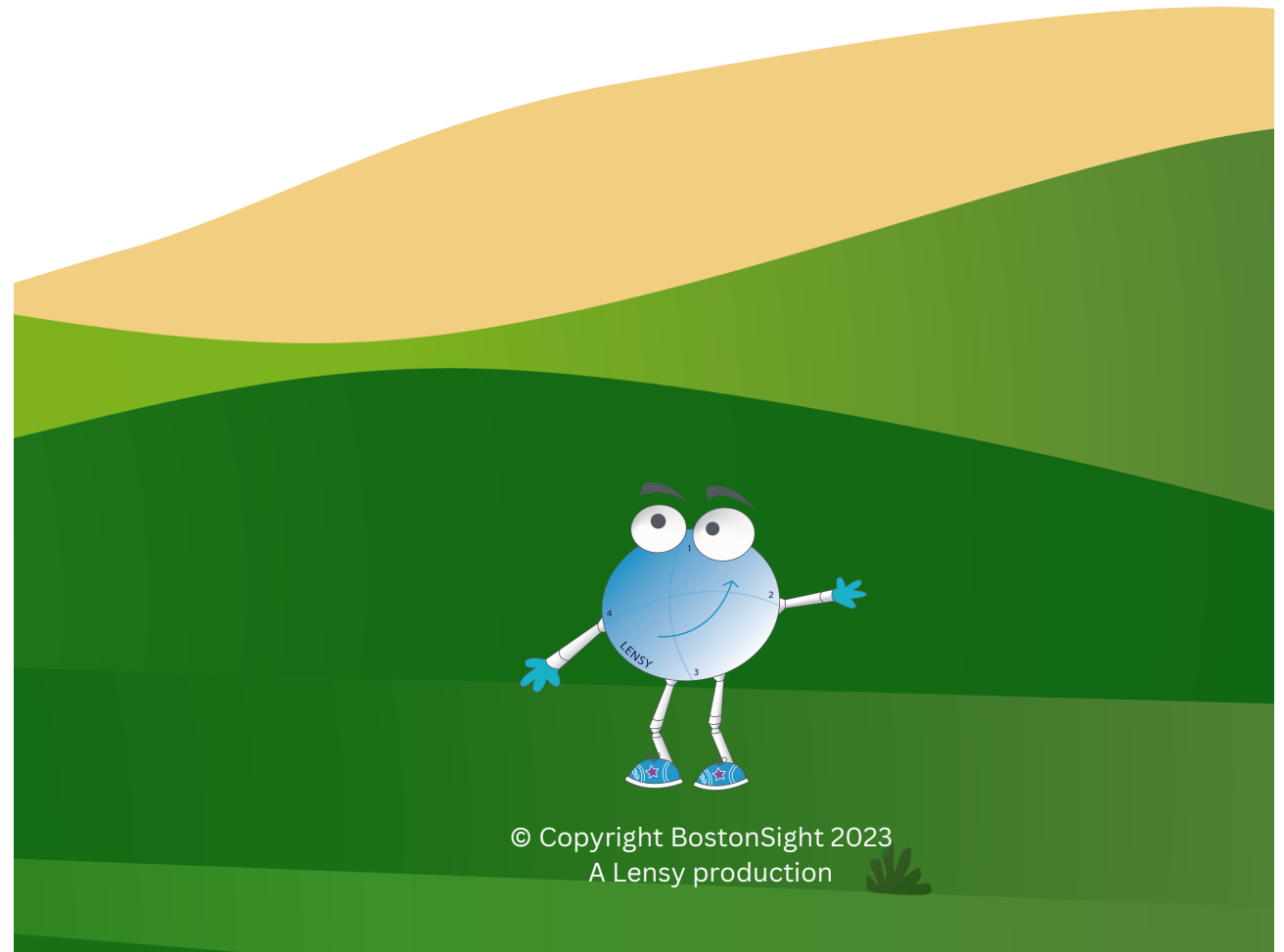
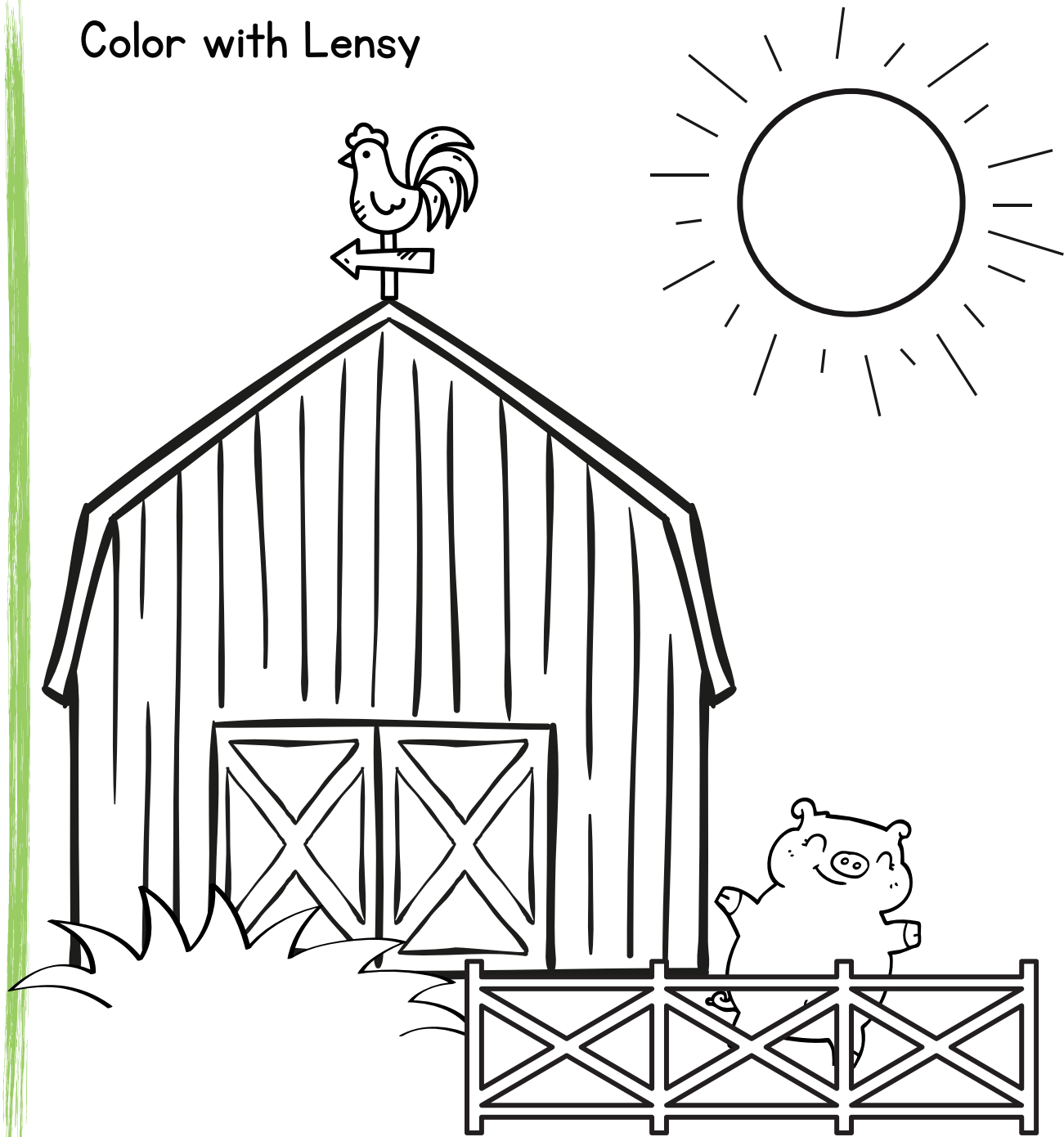


Lensy is the creation of Daniel C. Brocks, MD,  
Chief Medical Officer at BostonSight.

Special thanks to Anna Maria Baglieri, OD,  
of Boston Children's Hospital/Harvard Medical  
School, and Gail Windmueller, Certified Child Life  
Specialist affiliated with Boston Children's Hospital,  
for their input on this book.

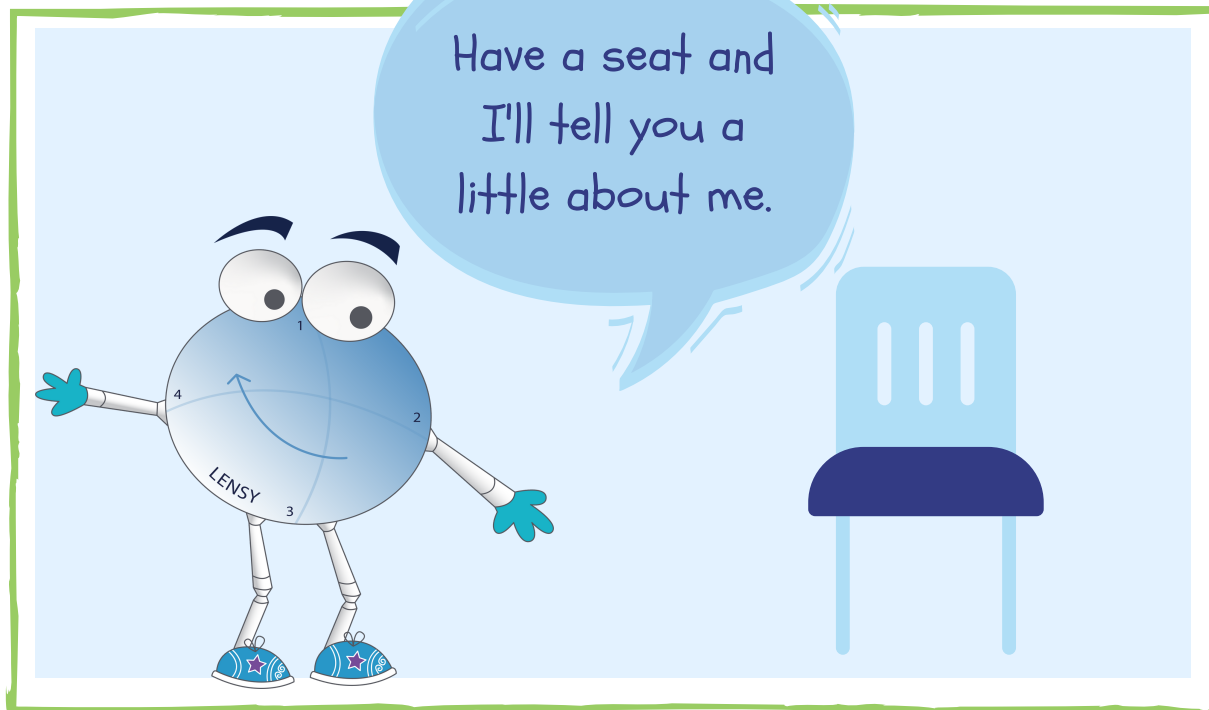
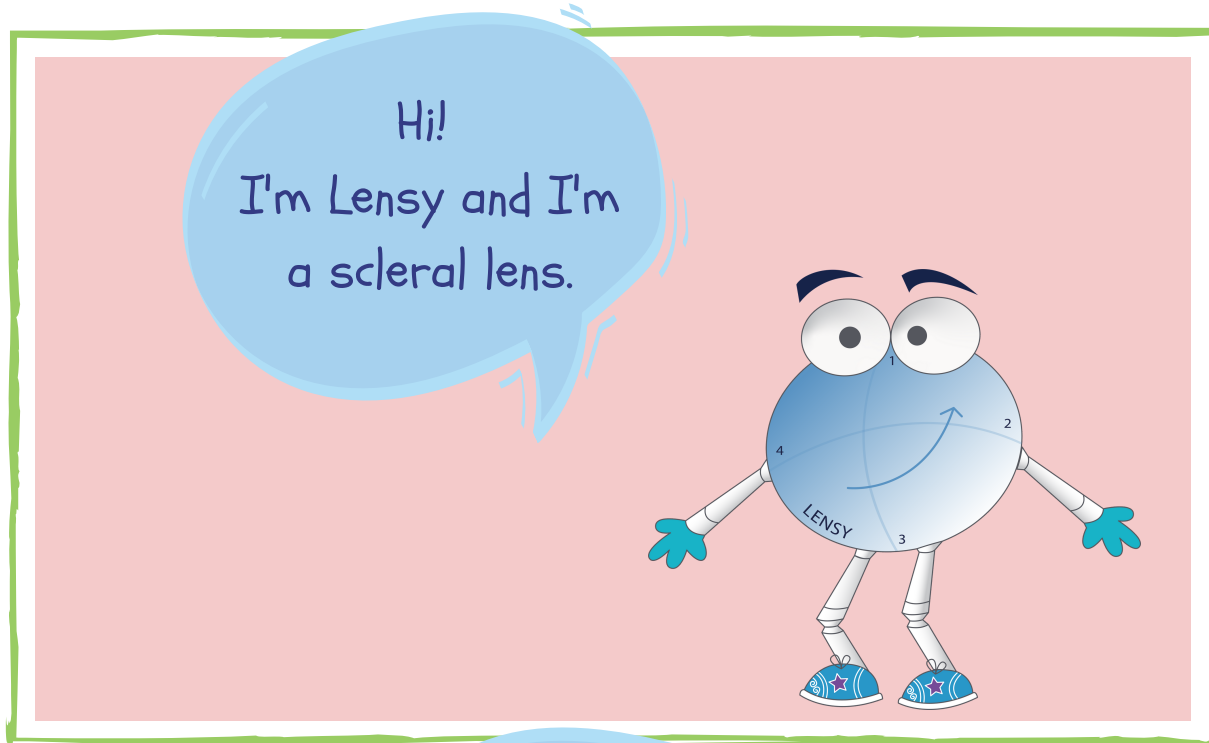


Color with Lensy



© Copyright BostonSight 2023  
A Lensy production

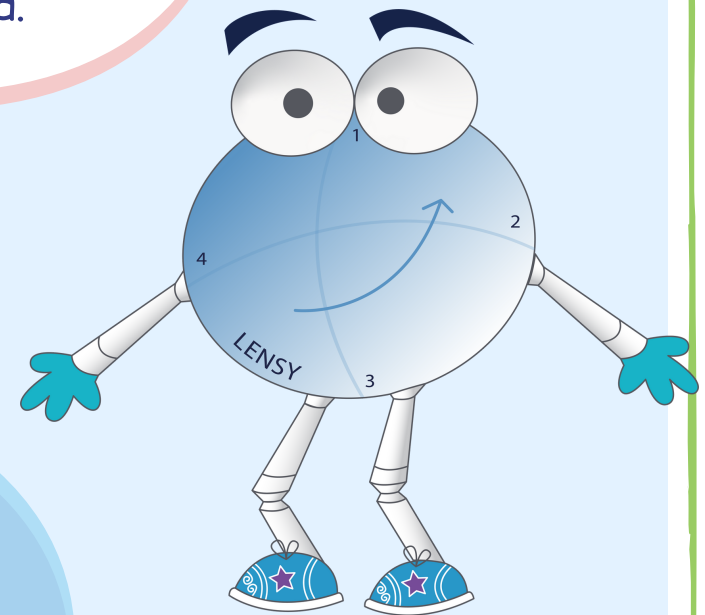




Practice with  
Lensy's Friends

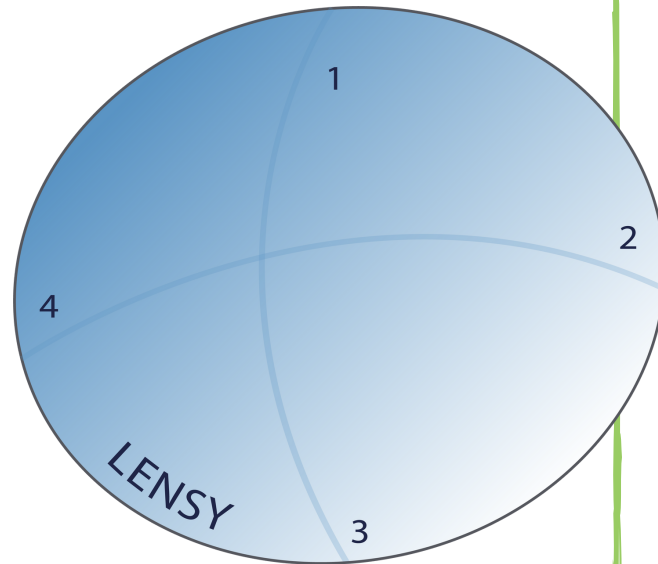
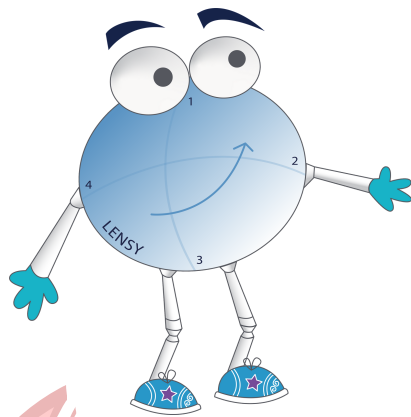


I am made of special plastic that fits over the part of your eye called the cornea.



My job is to help you see better and keep your eyes safe and feeling good.

My body has different sections. How many sections do you see?



These sections help the doctor match the shape of your eye. Neat, huh?

## Your Toolkit



### Scleral lens

What Lensy is! This is what she looks like from the side. A real scleral lens is made of special clear plastic and is shaped like a tiny bowl.



### Lens Applicator and Remover

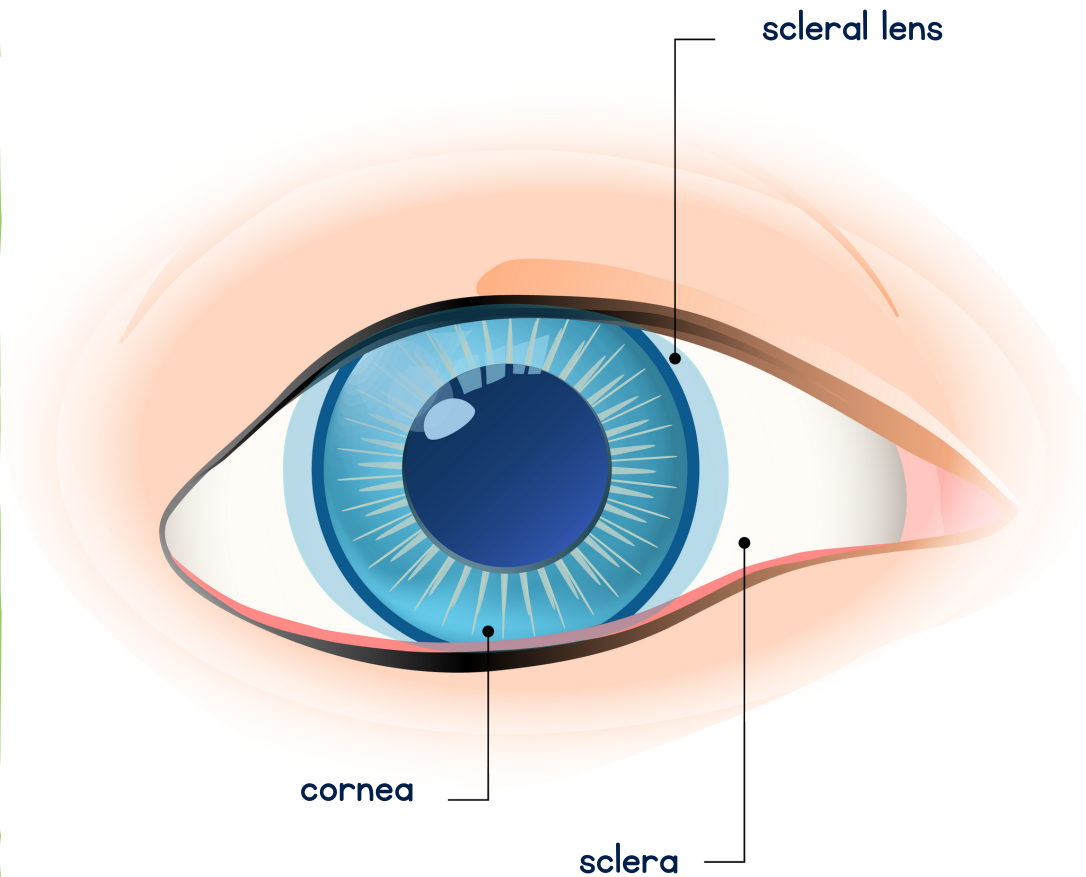
Special soft tools used to put on and take off your lenses.



### Drops

Eye drops are liquid that goes in your eye to make your eyes wet. Saline drops go in your scleral lens before you put the lens on your eye. Other drops, called Cleaning or Disinfecting Solution, wash your lenses to keep them clean.

## A Closeup of Your Eye

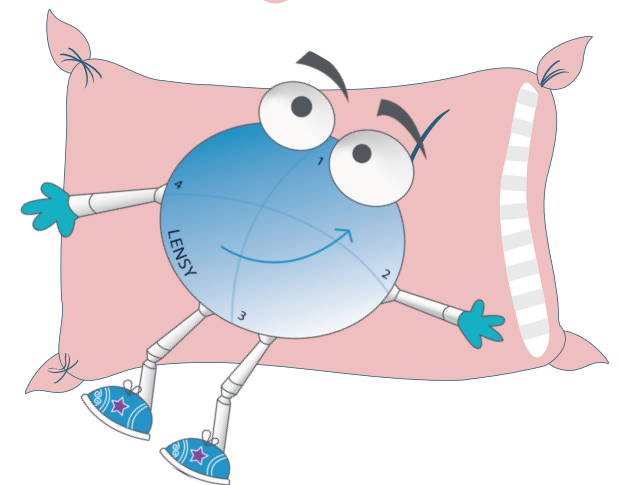


cornea - the clear part over the center of your eye

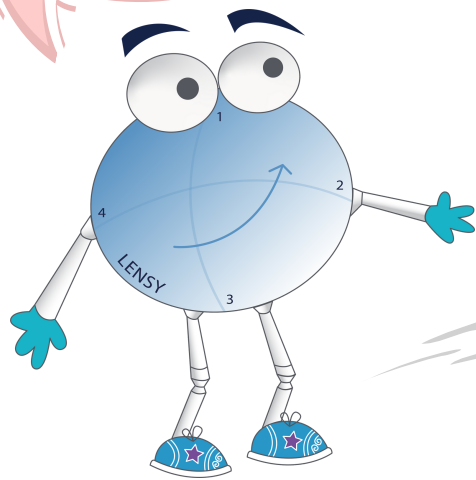
sclera - the white part of your eye

Because I am made just for you, I should feel very comfy on your eyes.

Ahhhhhhh...



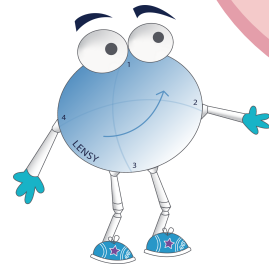
Follow me as we meet some of my friends.



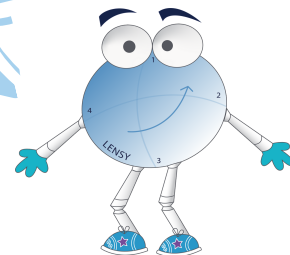
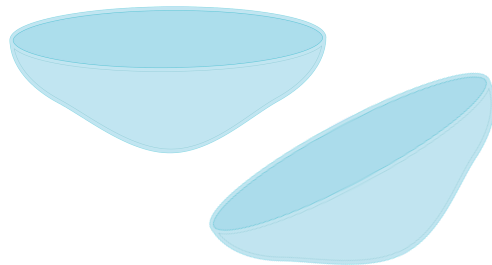
Sophie practices using her new lenses and soon she can put them on easily. She is very happy! Her eyes feel good, and she can see far across the field to her friends.



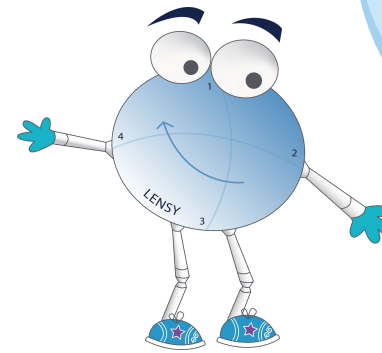
Sophie has to wait for her lenses to be made. This can take a few days or more.



When her lenses are ready, Sophie goes back to the doctor to get them.



There are lots of different reasons why someone might need a scleral lens.

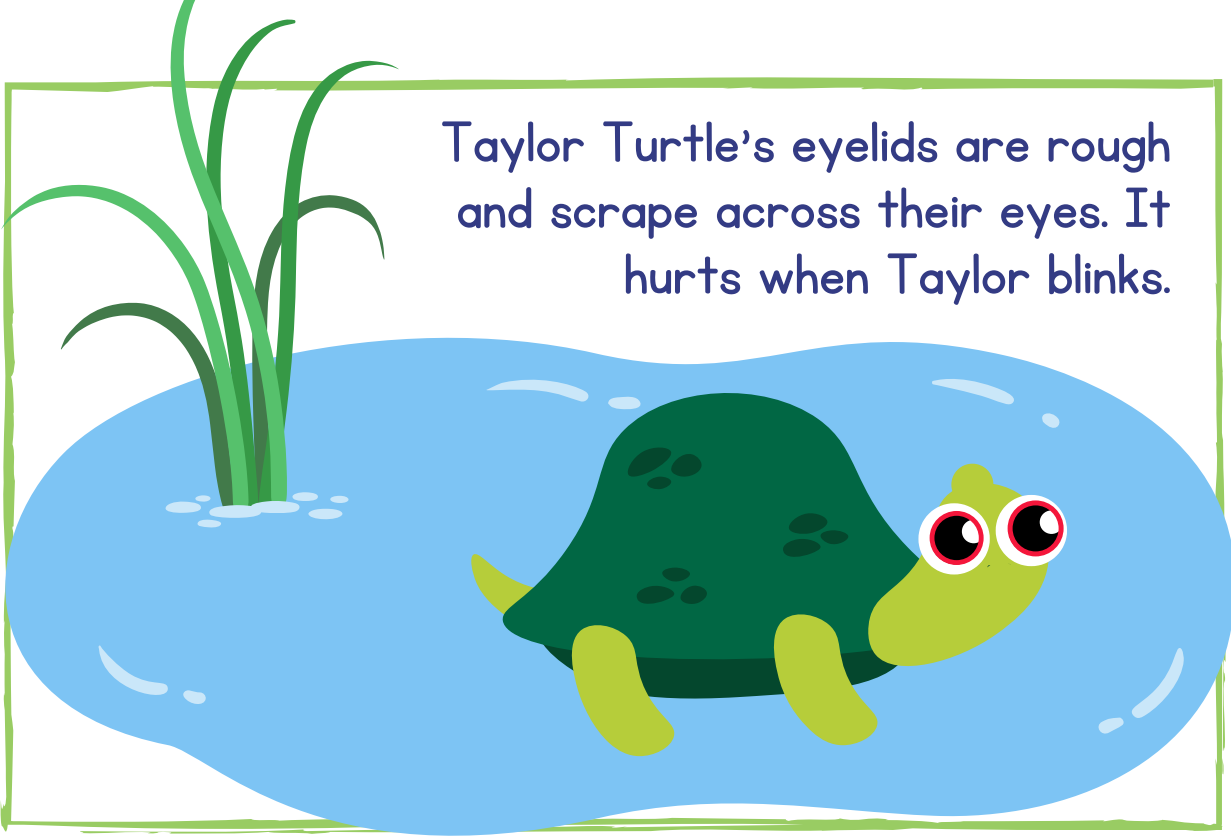


My friend, Sophie Sheep, has very dry eyes that hurt and sting and are red. It is hard for her to see.

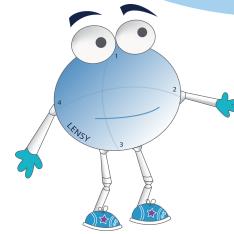




Taylor Turtle's eyelids are rough and scrape across their eyes. It hurts when Taylor blinks.



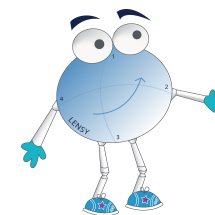
Or tired. Or want a break. That's okay. The doctor will fix the lenses so they feel good.



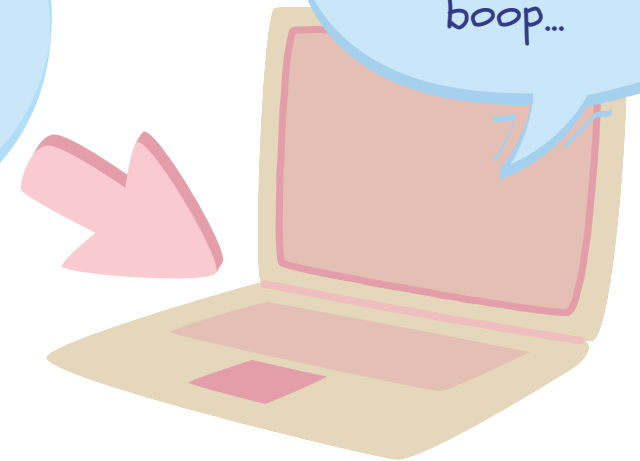
Tamara Tiger has very blurry vision and sore eyes. She cannot see across the plains.



Once the lenses fit, the doctor uses a computer to make the lenses Sophie will take home.

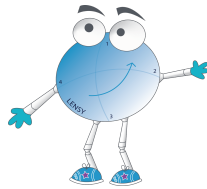


Boop, beep, beep, beep, boop...

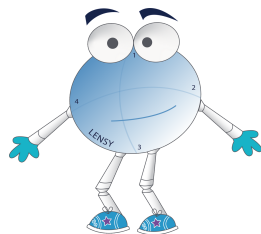




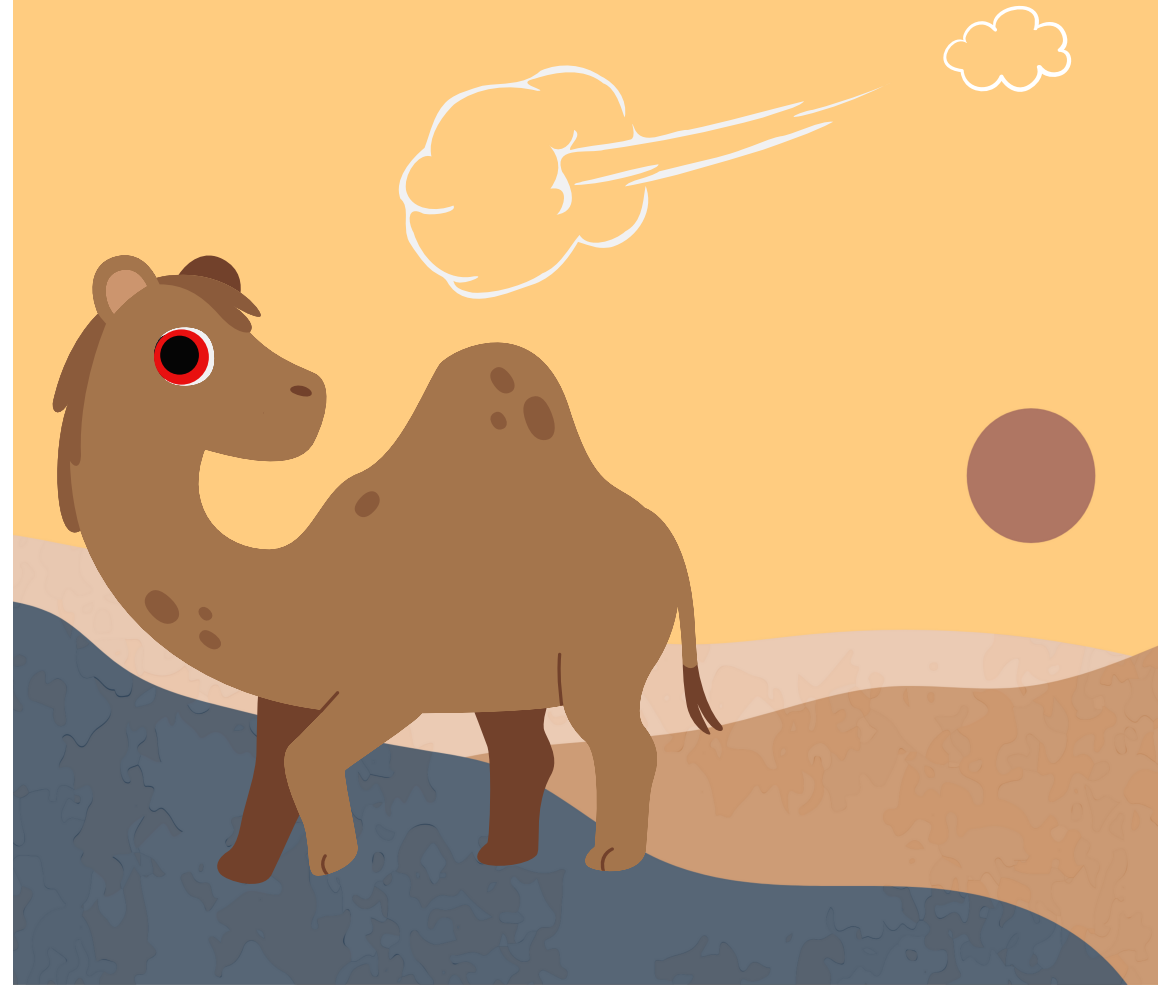
Next, Sophie looks down as the doctor brings the lens up to Sophie's eye. Keep your eye wide open, Sophie! It might take a few tries to put the lens on.



Sophie's eyes might not like how the lenses feel at first. Her eyes might feel a little weird.

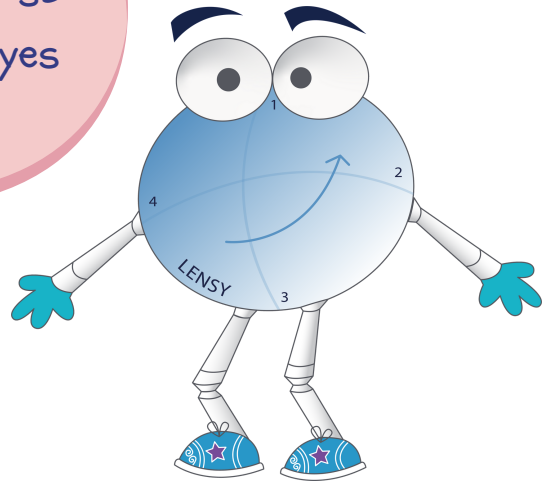


Connor Camel lives in the desert and can't close his eyes. If the sand blows into his eyes, it will hurt. Ouch!

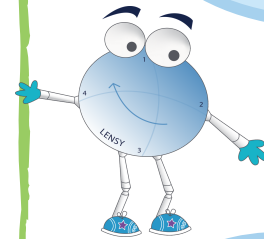




Let's help Sophie go to the eye doctor so we can help her eyes get better.



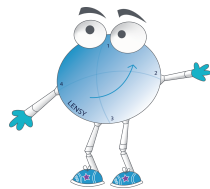
Next, the doctor puts eye drops in Sophie's eyes. Sometimes the drops look yellow.



These drops might feel cold and a little itchy.



First, the doctor checks Sophie's eyes to learn how well she can see.



The doctor is ready to put scleral lenses on Sophie's eyes. She puts different drops, called saline, in the scleral lens.

